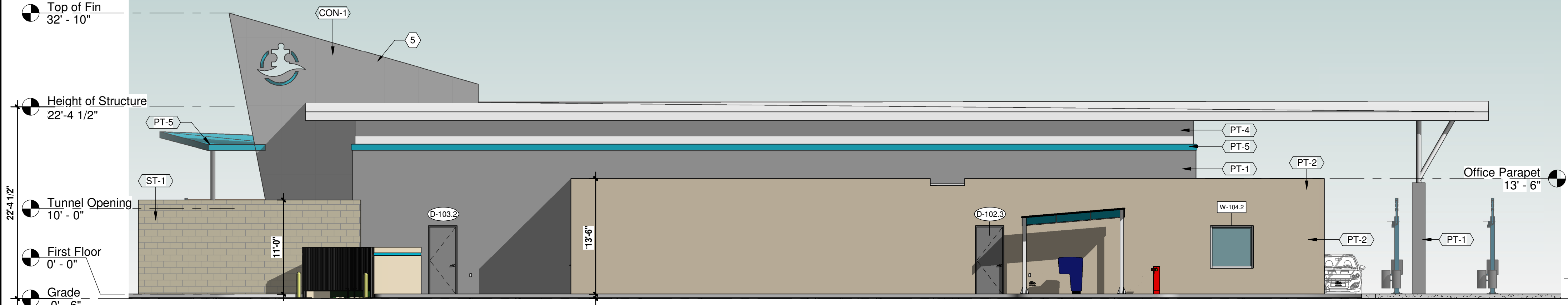




**DRC SUBMITTAL
RISING TIDE**

**2901 W ATLANTIC BOULEVARD
POMPANO BEACH FL 33069**



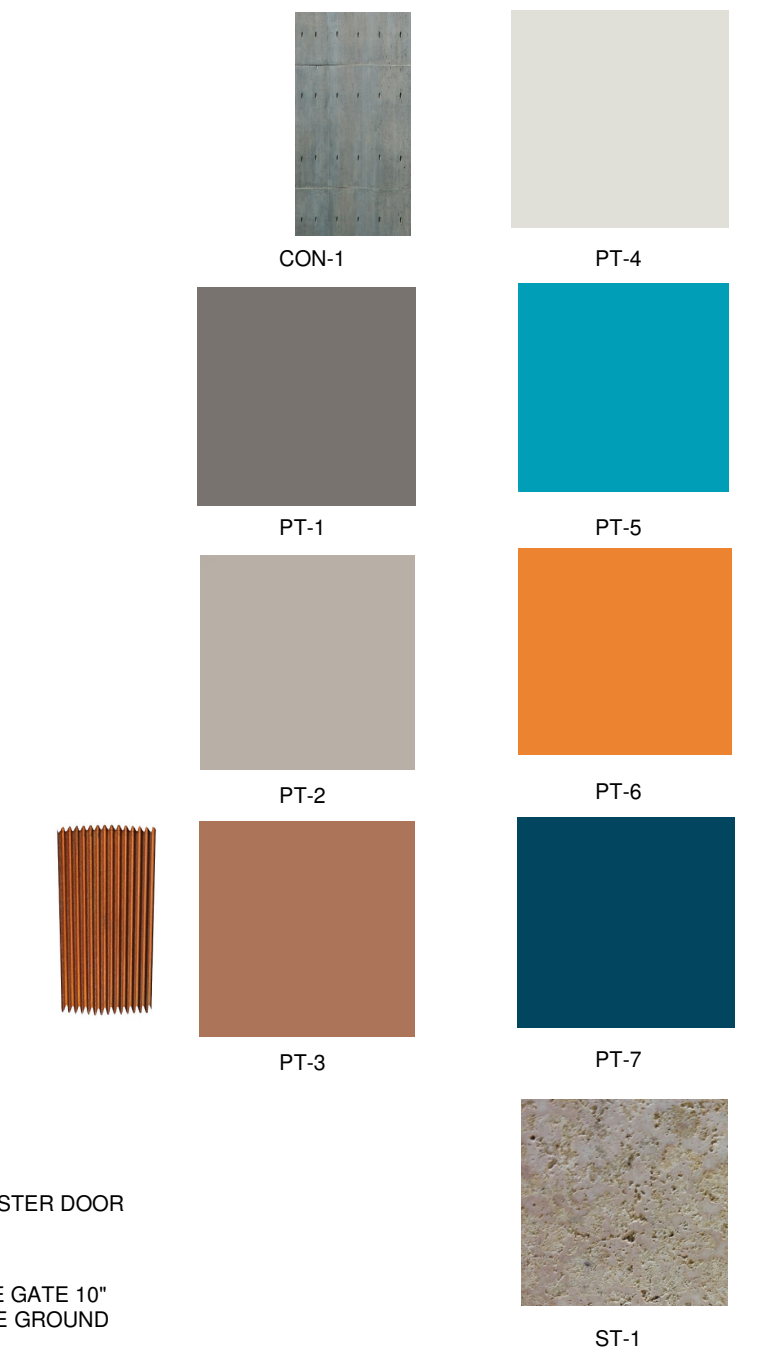
07

05



06

04



1. CONTRACTOR SHALL VERIFY ALL EXTERIOR MATERIAL COLORS AND FINISHES WITH THE ARCHITECT. ANY DISCREPANCIES NOTED SHALL BE BROUGHT TO THE ATTENTION OF THE ARCHITECT FOR CLARIFICATION.
2. REFER TO LIGHTING PLANS FOR LIGHTING FIXTURE LOCATION AND SCHEDULE.
3. SEPERATE BUILDING PERMIT MUST BE OBTAINED FOR ALL SIGNS

Elevations Keynote	
No.	Keynote
1	MAIN ENTRY DOOR: 3'-0" X 8'-0" STOREFRONT SYSTEM, IMPACT RATED ANODIZED ALUM.
2	14" WIDE X 1'-0" HIGH ROLL-ON OVERHEAD GARAGE DOOR: 2 PARTS, 14" MATCH PT-1 PAINT FINISH
3	STOREFRONT GLAZING SYSTEM - IMPACT RATED ANODIZED ALUM. MILLIONS WITH CLEAR IMPACT GLASS PANELS. REFER TO S-5.0 FOR WIND LOADS.
4	STOREFRONT GLAZING SYSTEM - ANODIZED ALUM. MILLIONS WITH BLACKED OUT GLASS PANELS.
5	VACUUM PUMP
6	METAL CANOPY CONTRACTOR TO PROVIDE: SHOP DRAWINGS, GROUT FILLED CELLS FOR SUPPORT THE PLATE
7	VACUUM ROOM
8	NATURALLY WEATHERED CORRUGATED METAL PANELS, BURNT ORANGE
9	PAIR OF 3' W X 8' H HOLLOW METAL IMPACT DOORS, PG-1 SEM GLOSS PAINT

Joshua A. Gonzalez
The Sherwin Williams Company
Professional Coatings Representative
954-868-4952
Joshua.a.gonzalez@sherwin.com



PZ25-12000026
01/06/2026

01